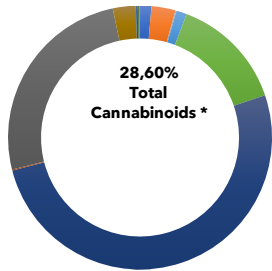


**CERTIFICATE OF ANALYSIS**

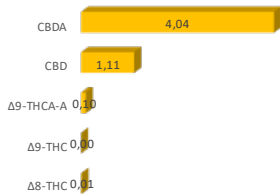
**Customer Name:** 7GB: AD;3 FD367 extraž  
**Address:** = ^\_ Wfe] Ě.q#S#!&1 ##" "" BcSYgW51 WZ[S  
**Phone Number:**  
**Email:**  
**Sample Type:** FLOWER  
**Sample Description:** Gelato Kush  
**Sample TAG ID:** 100427  
**Analysis Type:** Cannabinoids

**Date Received:** 20.Jun.23  
**Test Date:** 21.Jun.23  
**Test Method:** HPLC-01  
**Sample Weight (mg):** 101

**CANNABINOID PROFILE**



Compound		Result (% w/w)	mg/gram of sample
<b>THCV</b>	Tetrahydrocannabivarin	0,11	1,10
<b>Δ9-THCVA</b>	Tetrahydrocannabivarinic Acid	0,23	2,32
<b>Δ8-THC</b>	(-)-Δ8-Tetrahydrocannabinol	0,01	0,10
<b>Δ9-THC</b>	(-)-Δ9-Tetrahydrocannabinol	0,00	0,00
<b>Δ9-THCA-A</b>	(-)-trans-Δ9-THC acid A	0,10	1,01
<b>CBD</b>	Cannabidiol	1,11	11,11
<b>CBDA</b>	Cannabidiolic acid	4,04	40,40
<b> CBDV</b>	Cannabidivarin	0,01	0,10
<b>CBG</b>	Cannabigerol	2,02	20,20
<b>CBGA</b>	Cannabigerolic acid	0,22	2,22
<b>CBN</b>	Cannabinol	0,02	0,20
<b>CBC</b>	(±) Cannabichromene	0,01	0,10
<b>CBL</b>	(±)-Cannabicyclol	0,01	0,10
<b>9S-HHC</b>	9(S)-Hexahydrocannabinol	0,00	0,00
<b>9R-HHC</b>	9(R)-Hexahydrocannabinol	0,00	0,00
<b>H4CBD</b>	Tetrahydrocannibidiol	20,71	207,05
<b>THC-P</b>	Tetrahydrocannabiphorol	0,00	0,00
<b>Total Cannabinoids *</b>		<b>28,60</b>	<b>286,02</b>
Total Potential THC		0,09	0,89
Total Potential CBD		4,65	46,54
Total Potential CBG		2,22	22,15
Total Potential HHC		0,00	0,00
Total Potential H4CBD		20,71	207,05
Total Potential THC-P**		0,00	0,00



**NOTES**

\* Total Cannabinoids = sum of all measured natural occurring cannabinoids  
Total Potential THC = Δ9-THC + Δ8-THC + Δ9-THCA-A\*0.877  
Total Potential CBD = CBD + CBDA\*0.877  
Total Potential CBG = CBG + CBGA\*0.878  
Total Potential THC-P = Sum of all the ISOMERS

**FINAL APPROVAL**

**Analyst Name:** GP **QA Name:** GP  
**Date:** 21.Jun.23 **Date:** 21.Jun.23

Prepared and Approved by - This analysis report has been prepared by producer's analytical department.

Testing results are based solely upon the sample submitted to **EGBB>; 7D** in the condition it was received. **EGBB>; 7D** warrants that all analytical work is conducted professionally in accordance with all applicable standard laboratory practices using validated methods. This report may not be reproduced, except in full, without the written approval of **EGBB>; 7D**.